

PRD10847 CAM INT AHD720P/3.6MM/M.DOME/S/IR C/AUD/M12 MACHO DATASHEET



DESCRIPTION

Designed especially for automotive use, Actia surveillance cameras are ideal to be applied in environments subject to mechanical vibrations, dynamic stresses and temperature variations.

FEATURES

- Works in low light
- High definition image
- AHD technology
- 720P resolution
- Automatic gain control
- Low operation consumption
- With built-in microphone

	By	Date	CAM INT AHD720P/3.6MM/M.DOME /S/IR C/AUD/M12 MACHO	Ref. ACTIA	Index
Draw	G.Costa	12/13/19		PRD10847	Rev00
Rev.	W.Marques	12/13/19			
Appr.	C.Dambroz	12/13/19			Page 1/4

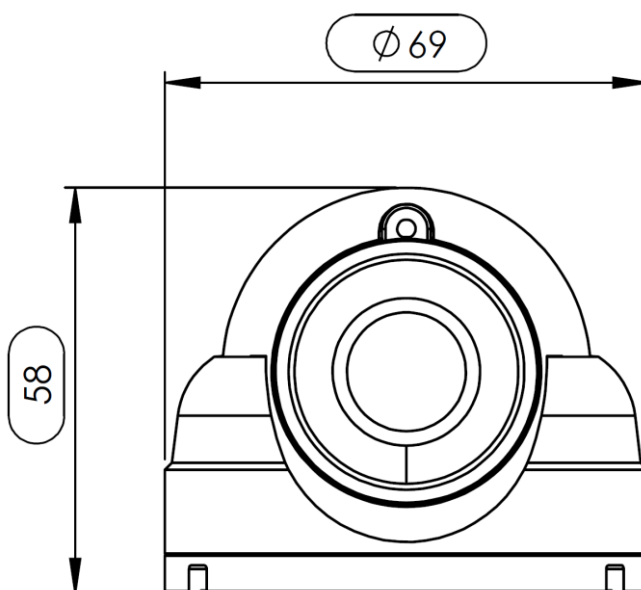
TECHNICAL DATA

Sensor	1/3"
Color System	NTSC
Effective Pixels	1280(H) x 720(V) (720P AHD)
Minimum Illumination	0.1 lux
Sync Mode	Internal synchronization
Electronic shutter	Auto, NTSC 1/60~100,000Sec
SNR	≥46dB
White balance	Auto
Backlight Compensation	Auto
AGC	Auto
Operating Voltage	DC12V±1V
Current	Normal : 62mA±10mA
Cable length	40cm (with connector)
Audio	Frequency Response: 100Hz-8KHz Sensitivity: -46 ± 3dB
Operating Temperature	-20°C~+60°C RH95% Max
Storage Temperature	-40°C~+60°C RH95% Max
Dimensions	69mm x 58mm
Connector	M12 aviation MALE 4-pin
Lens Size	3.6mm
Viewing Angle	horizontal≈65°±2°, vertical≈45°±2°, diagonal≈82°±2°
IP grade	IP64
Weight	159g

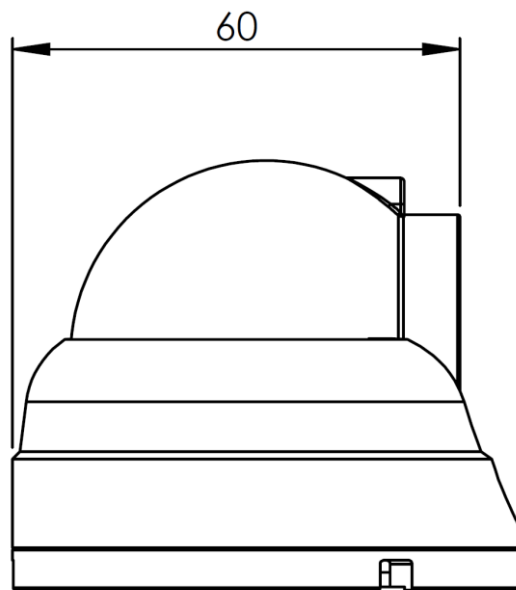
DIMENSIONS

(Millimeters)

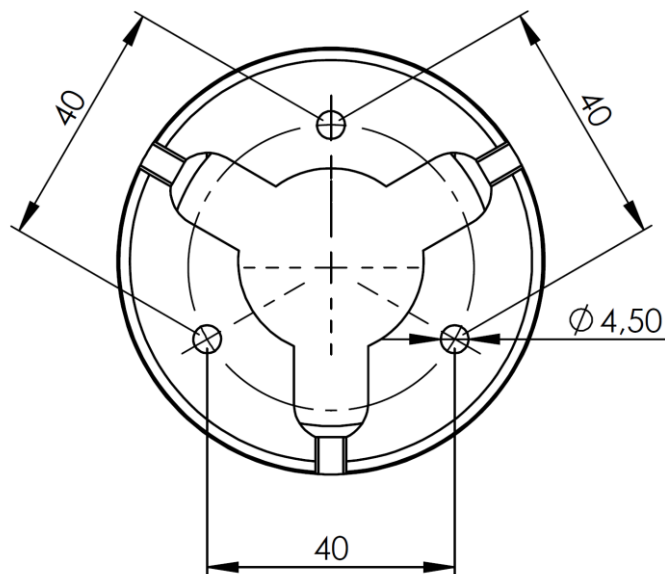
Front view



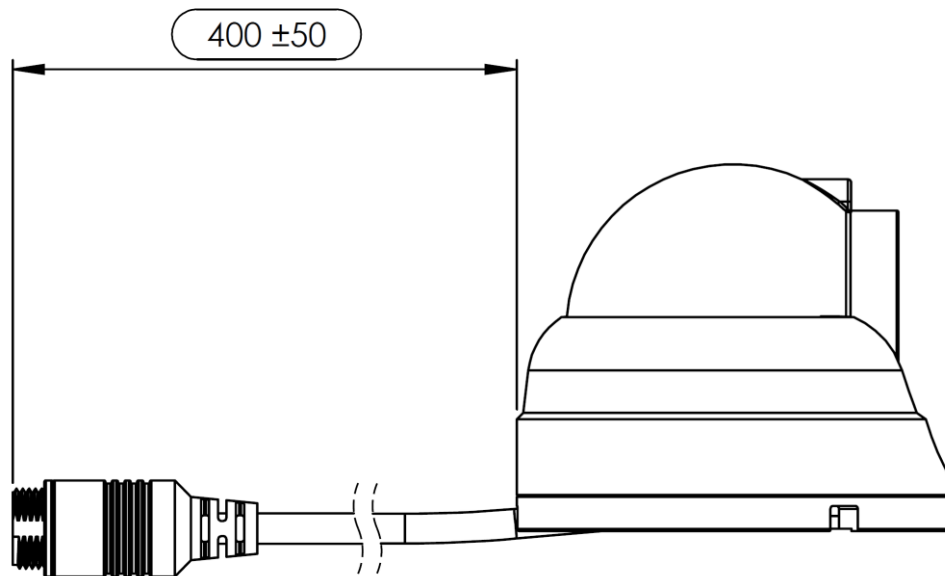
Side view



Bottom view

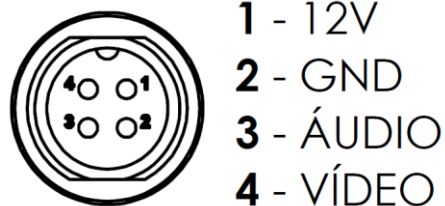


Cable length



CONNECTION DETAILS

Connector pinout



REVISIONS HISTORY

<i>Review</i>	<i>Date</i>	<i>Reviewer</i>	<i>Description</i>
00	12/13/19	G. Costa	Document creation.