

## PRD10845 CAM INT AHD720P/2.8MM/M.DOME/FULL/M12 MACHO DATASHEET



### DESCRIPTION

Designed especially for automotive use, Actia surveillance cameras are ideal to be applied in environments subject to mechanical vibrations, dynamic stresses and temperature variations.

### FEATURES

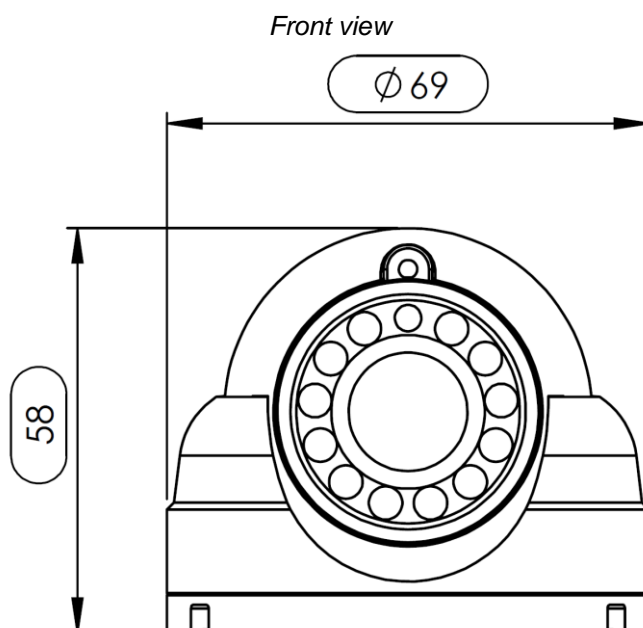
- Night vision available
- Automatic day / night sensor.
- Infrared with 12 LEDs.
- Works in low light
- High definition image
- AHD technology
- 720P resolution
- Automatic gain control
- Low operation consumption
- With built-in microphone

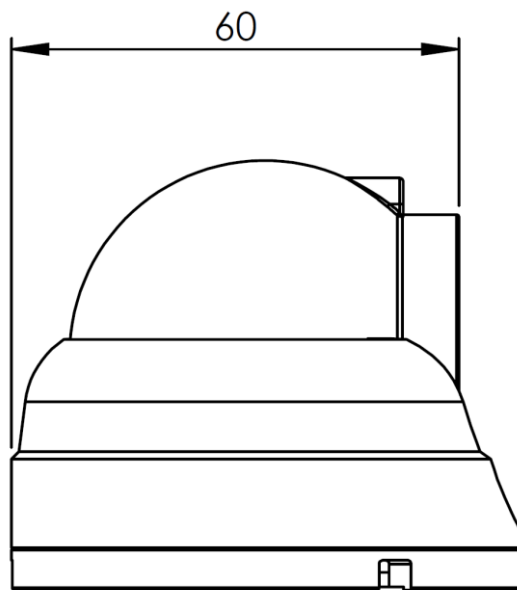
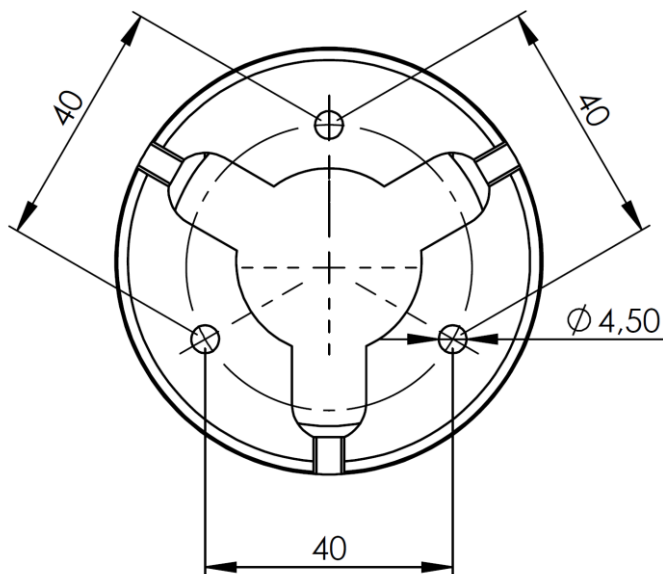
	By	Date	CAM INT AHD720P/2.8MM/M.DOME /FULL/M12 MACHO	Ref. ACTIA	Index
Draw	G.Costa	12/13/19		<b>PRD10845</b>	<b>Rev00</b>
Rev.	W.Marques	12/13/19			
Appr.	C.Dambroz	12/13/19			Page 1/4

## TECHNICAL DATA

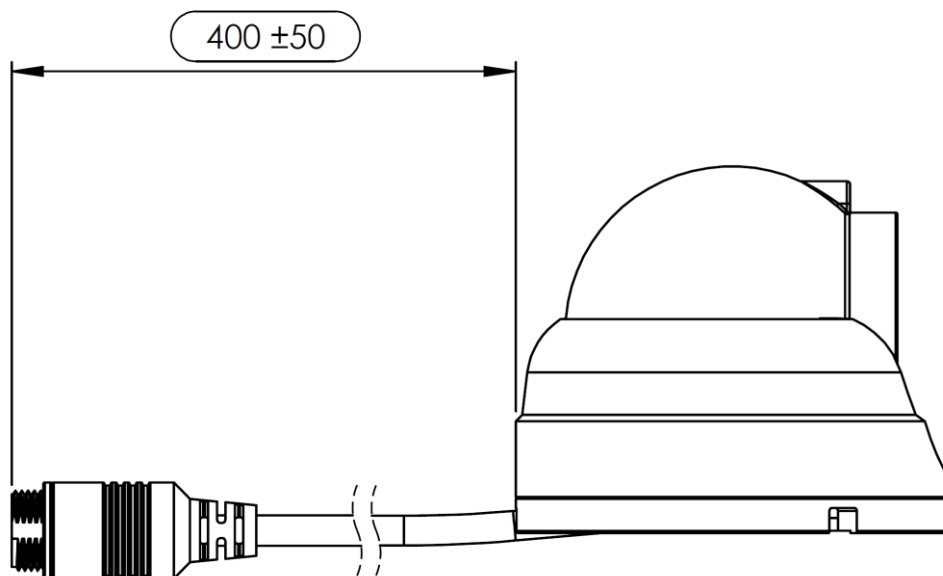
<b>Sensor</b>	1/3"
<b>Color System</b>	NTSC
<b>Effective Pixels</b>	1280(H) x 720(V) (720P AHD)
<b>Minimum Illumination</b>	0.1 lux
<b>Sync Mode</b>	Internal synchronization
<b>Electronic shutter</b>	Auto, NTSC 1/60~100,000Sec
<b>SNR</b>	≥46dB
<b>White balance</b>	Auto
<b>Backlight Compensation</b>	Auto
<b>AGC</b>	Auto
<b>Night Vision Distance</b>	< 6M (12 LEDs)
<b>Operating Voltage</b>	DC12V±1V
<b>Current</b>	Normal : 60mA ± 10mA Night vision: 142mA ± 10mA
<b>Cable length</b>	40cm (with connector)
<b>IR Cut</b>	Automatic (day and night)
<b>Audio</b>	Frequency Response: 100Hz-8KHz Sensitivity: -46 ± 3dB
<b>Operating Temperature</b>	-20°C~+60°C RH95% Max
<b>Storage Temperature</b>	-40°C~+60°C RH95% Max
<b>Dimensions</b>	69mm x 58mm
<b>Connector</b>	M12 aviation MALE 4-pin
<b>Lens Size</b>	2.8mm
<b>Viewing Angle</b>	horizontal≈85°±2°, vertical≈65°±2°, diagonal≈106°±2°
<b>IP grade</b>	IP64
<b>Weight</b>	166g

## DIMENSIONS (Millimeters)



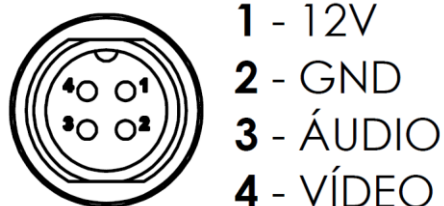
*Side view**Bottom view*

*Cable length*



## CONNECTION DETAILS

*Connector pinout*



## REVISIONS HISTORY

<i>Review</i>	<i>Date</i>	<i>Reviewer</i>	<i>Description</i>
00	12/13/19	G. Costa	Document creation.