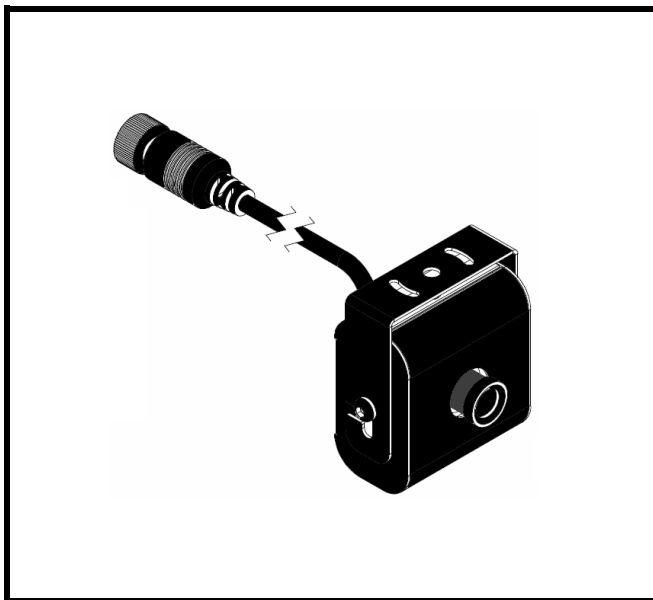


**PRD10474 CAMERA 12V COLOR 1/3" CMOS W/ MIRROR
DATASHEET****DESCRIPTION**

Specially designed for automotive uses, the 12V CMOS Color Camera is perfect for rear view and surveillance systems.

FEATURES

- Super low illumination;
- Wide viewing angle;
- High-definition;
- Auto Gain Control;
- Internal Synchronization;
- Low Power Consumption.
- Image mode Mirror

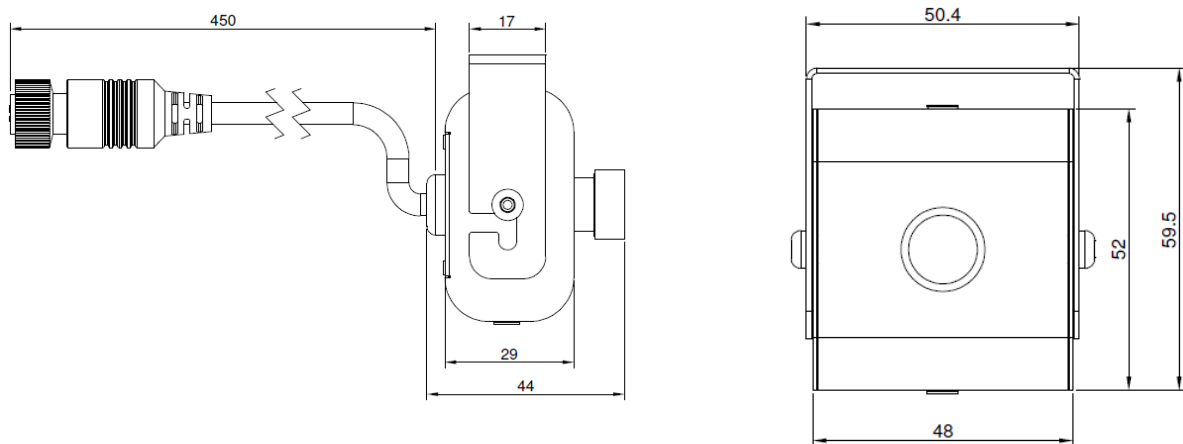
| | By | Date | CAMERA 12V COLOR 1/3" CMOS W/ MIRROR | Ref. ACTIA | Index |
|-------|-----------|----------|--|-----------------|--------------|
| Draw | A.Avila | 12/03/09 | | PRD10474 | Rev01 |
| Rev. | G.Costa | 06/14/19 | | | Page 1/3 |
| Appr. | C.Dambroz | 06/14/19 | | | |

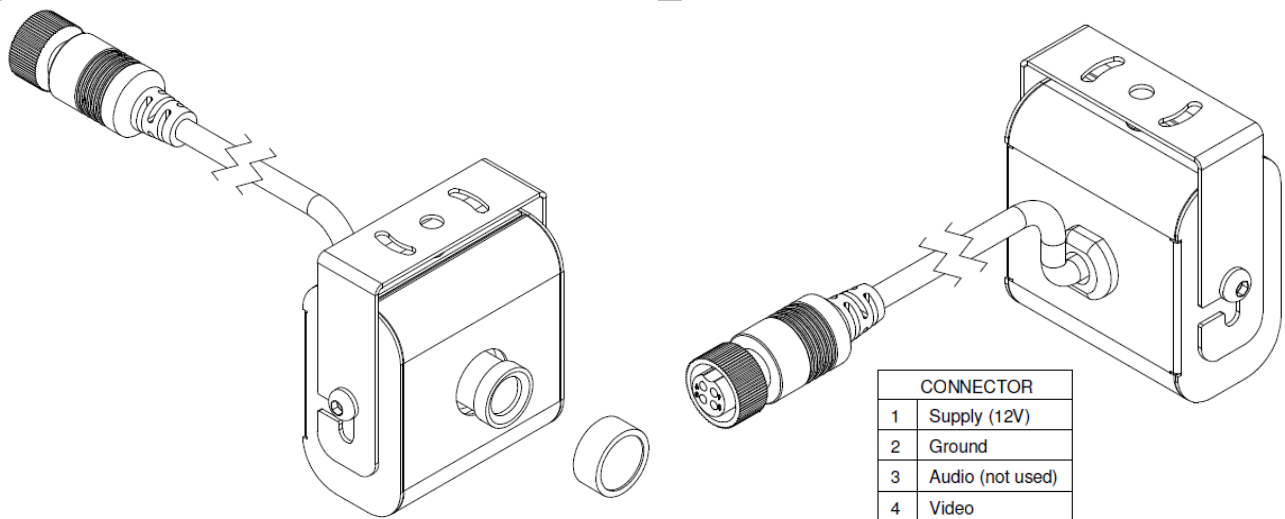
TECHNICAL DATA

| | |
|----------------------------------|---------------------------|
| Image Device | 1/3" CMOS PC1058 |
| TV System | NTSC |
| Effective Pixels | 960 (H) x 480 (V) |
| Sensing Area | 4.880mm (H) x 3.670mm (V) |
| Scanning System | 2:1 Interlace |
| Sync. System | Internal |
| Resolution | 600 TV Lines |
| Horizontal Sync Frequency | 15.734 KHz |
| Vertical Sync Frequency | 60 Hz |
| Video output | 1.0Vpp, 75Ohm |
| Gamma Consumption | 0.45 |
| AGC | Auto |
| S/N Ratio | Better than 43.3dB |
| White Balance | Auto |
| Electronic Shutter | 1/60~1/100,000 Seconds |
| BLC | Auto |
| Operating Temperature | -20°C ~70°C, RH 95% MAX |
| Storage Temperature | -40°C ~80°C, RH 95% MAX |
| Power Supply | DC 12V |
| Waterproof rating | NON-Waterproof |
| Viewing Angle | 120° |
| Audio | No |
| Minimum Illumination | 0.1 Lux |
| Image mode | Mirror |

DIMENSIONS

(Millimeters)





REVISION HISTORY

| <i>Revision</i> | <i>Date</i> | <i>Reviewer</i> | <i>Description</i> |
|------------------------|--------------------|------------------------|---|
| 00 | 12/03/2009 | A.Avila | Document creation. |
| 01 | 06/14/2019 | G.Costa | Update layout and technical information |