

PRD10835 - MONITOR TFT 10.1" 10-32V 3CAM COLOR DATASHEET



DESCRIPTION

ACTIA TFT monitors are designed to meet automotive requirements and have specific functions for entertainment and surveillance applications on buses, buses, trucks, trains, vans, trailers and other commercial vehicles.

FEATURES

- Supports 3 AHD cameras with a maximum resolution of 1080P.
- With remote control.
- Multiple video formats: PAL / NTSC / HDAHD / HDTV / HDCVI (720P / 1080P).
- High resolution TFT LCD.
- Compact and innovative design.
- Easy installation in security system.
- Wide operating voltage range 10 ~ 32VDC.

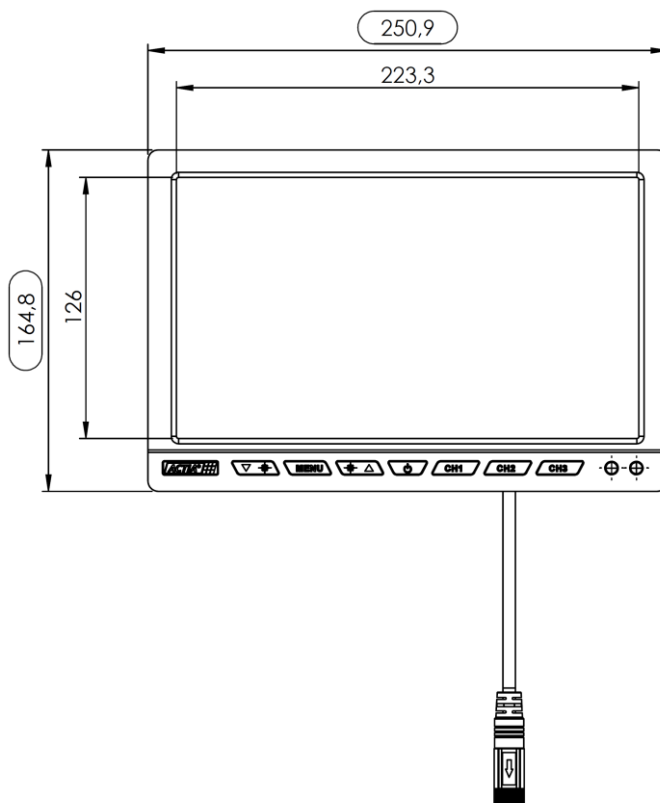
	By	Date	MONITOR TFT 10.1" 10-32V 3CAM COLOR	Ref. ACTIA	Index
Draw.	G. Costa	30/04/2020		PRD10835	Rev00
Rev.	G. Costa	30/04/2020			
Appr.	C. Dambroz	30/04/2020			Page 1/6

TECHNICAL DATA

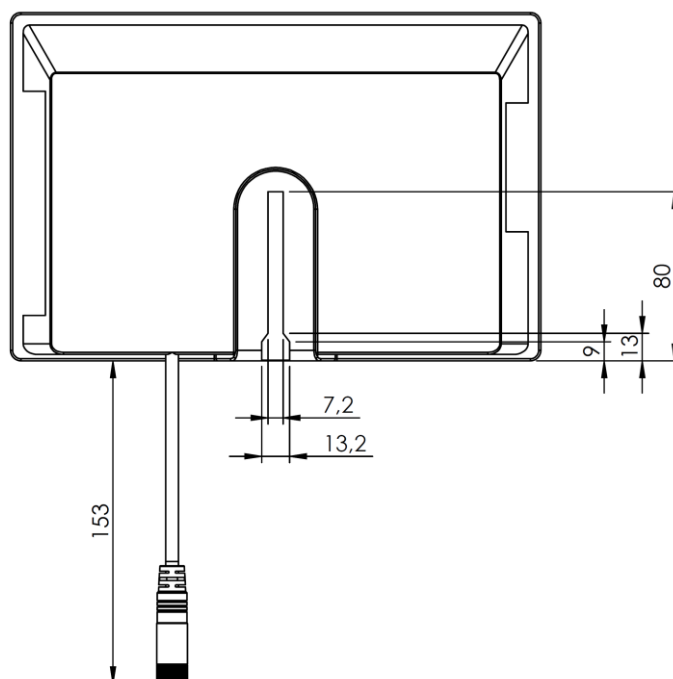
PARAMETER	VALUE
LCD Screen Size	10.1"
LCD Screen Resolution	1024x600
Anti-reflective LCD screen	No
Supply voltage	10VDC~32VDC
Maximum power consumption	< 10W
Energy consumption	6W
Standby power consumption	< 2.5W
Operating Temperature	0°C ~+60°C, HR 90%
Storage Temperature	-10°C ~+70°C, HR 90%
Video System	PAL / NTSC
Aspect Ratio	16:9
Contrast Ratio	500:1
Luminance	300 cd/m ²
Viewing Angle	U: 50° / D: 70°, R/L: 70° / 70°
Screen Response Time	25ms (maximum)
Video inputs (cameras)	3
Number of Triggers	3 (VCC-enabled)
Video Signals Type	TVL, AHD 720P/30, AHD 1080P/30
Protection Fuse	Yes
Dimensions	250.9mm (width) x 164.8 (height) x 34mm (length)
Monitor Weight	622g
Built-in support weight	161,78g
Connecting cable weights	235,59g
Remote Control Weight (without battery)	19,35g

DIMENSIONS

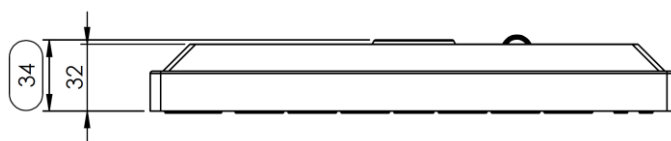
(Millimeters)



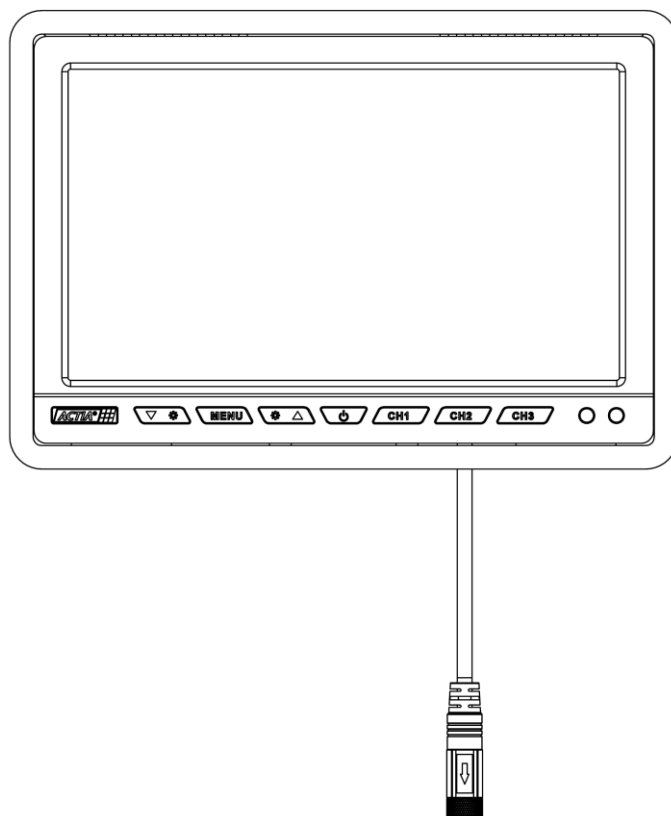
Front view without built-in bracket



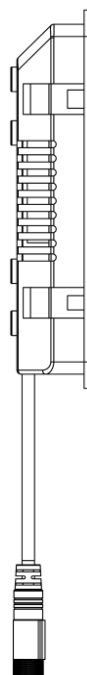
Rear view without built-in bracket



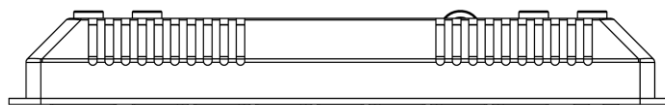
Top view without built-in bracket



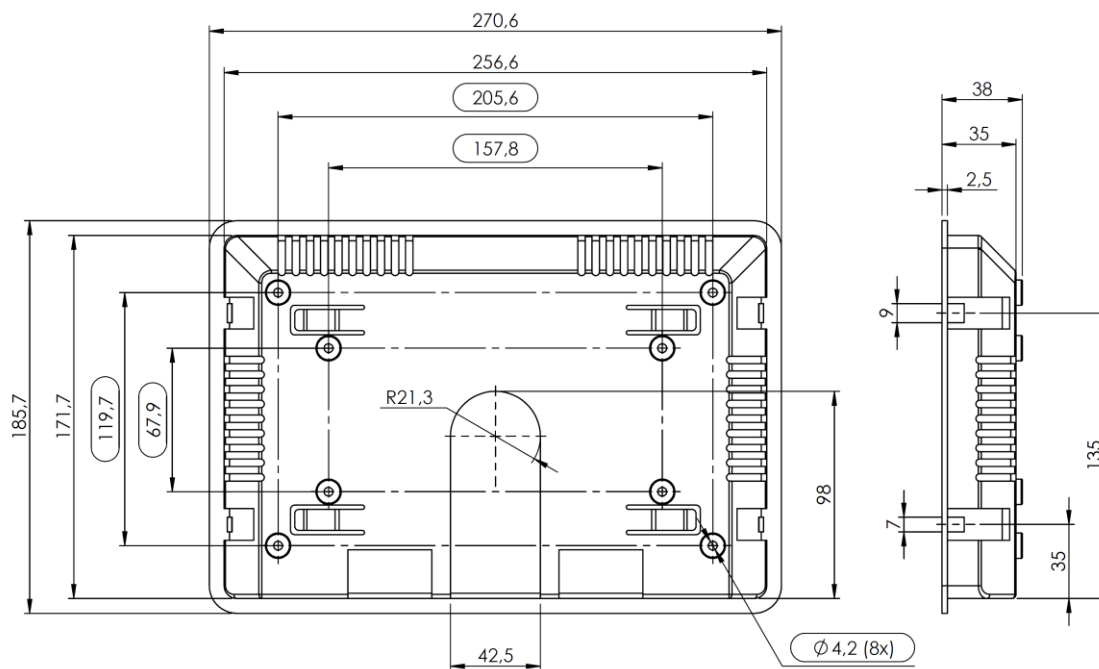
Front view with built-in bracket



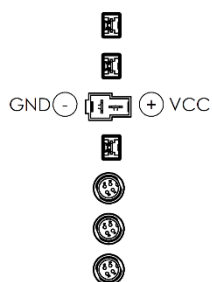
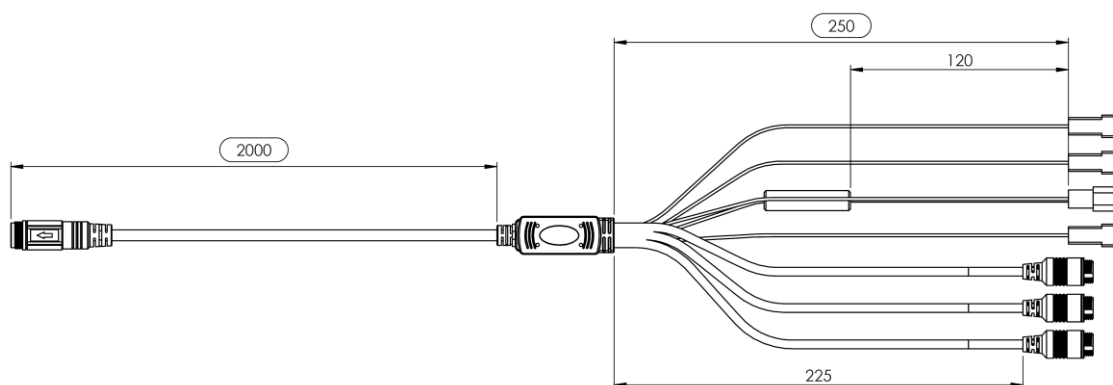
Side view with built-in bracket



Top view with built-in bracket

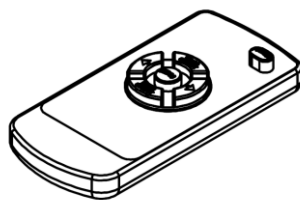


Built-in bracket



Cor Color	Função Function
BROWN	CH1 TRIGGER
BLACK	GND
BLUE	CH3 TRIGGER
YELLOW	VCC
GREEN	CH2 TRIGGER
BLACK	CAM1
BLACK	CAM2
BLACK	CAM3

Connecting Cable

*Remote Control***REVISION HISTORY**

<i>Revision</i>	<i>Date</i>	<i>Reviewer</i>	<i>Description</i>
00	30/04/2020	C. Dambroz	Document creation.